


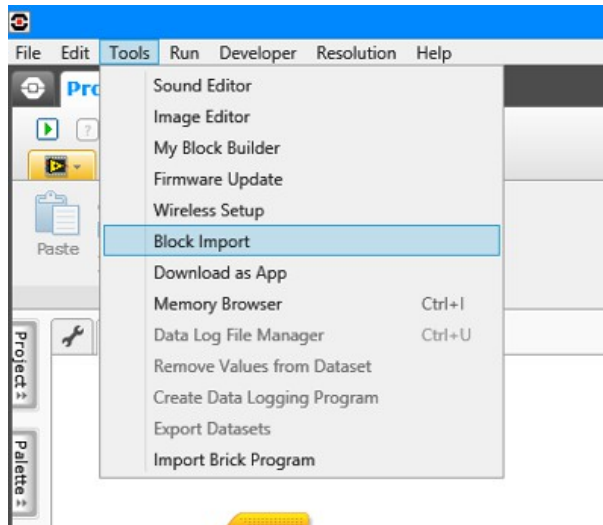

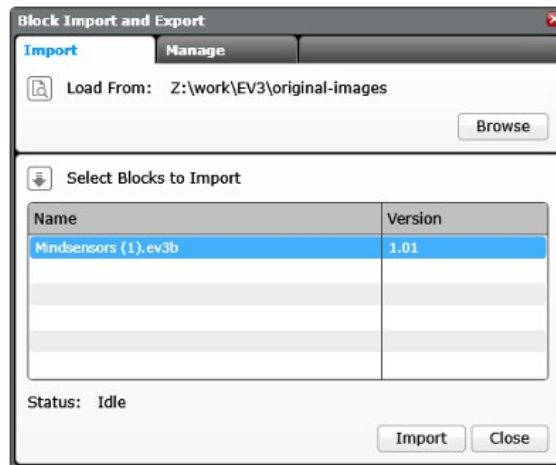




Installation Instructions:

-  Download the 'Mindensors...' Block
-  Open the EV3 software
-  Start a new program and open the "Block Import" Wizard from the tools menu



-  Click Browse and select the desired <product name>.ev3b block file.



-  Select the desired <product name>.ev3b block from the "Select Blocks to Import" list.
-  Click Import.



Answer 'OK' to any 'Replace...' popup that might show up.

After Installation

1. Restart the EV3 software.
2. Observe there should be new 'Mindsensors...' blocks on the Action (green), Sensor (yellow), or Advanced (blue) palettes to the lower region of the window.
3. You can drag and drop these new blocks into your programs.
4. Build Robot, write program, and have fun.